

University of Missouri-Kansas City School of Law

UMKC School of Law Institutional Repository

Kansas City School of Law Pandex Collection

Special Collections

1947

The Kangaroo, Volume XLIII

Follow this and additional works at: <https://irlaw.umkc.edu/yearbooks>



Part of the [Law Commons](#)

Recommended Citation

"The Kangaroo, Volume XLIII" (1947). *Kansas City School of Law Pandex Collection*. 35.
<https://irlaw.umkc.edu/yearbooks/35>

This Yearbook is brought to you for free and open access by the Special Collections at UMKC School of Law Institutional Repository. It has been accepted for inclusion in Kansas City School of Law Pandex Collection by an authorized administrator of UMKC School of Law Institutional Repository.

NINETEEN FORTY SEVEN

THE KANGAROO

The
KANGAROO
1947



24126

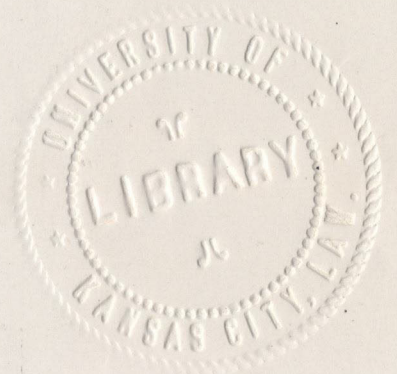
THE UNIVERSITY OF
KANSAS CITY

Presents

The

KANGAROO

1947

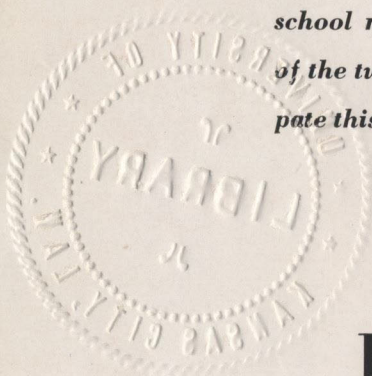


EDITOR BETTY WEISER • BUSINESS MANAGER MARY ELIZABETH SNEARY



For the first time, the Kangaroo, Liberal Arts, Law and Pharmacy yearbook, and the Bushwhacker, Dentistry yearbook, have joined forces to publish an enlarged annual. This act has been facilitated by the rapid growth of the University of Kansas City, which warranted the publication of one yearbook rather than separate ones.

After much controversy, it was decided to retain the name "Kangaroo" for the book as a whole. Each of the four schools has a separate section with the name of its former annual. It was realized that when the Dental school moved its headquarters out to the main campus, an amalgamation of the two yearbooks would be in order. The staffs have attempted to anticipate this move. We therefore present you with the new and "better" product.



FOREWORD

TABLE OF CONTENTS

BOOK ONE: The All Student Association

BOOK TWO: The School of Liberal Arts

BOOK THREE: The School of Law

BOOK FOUR: The School of Pharmacy

BOOK FIVE: The School of Dentistry





DEDICATION

To the main character on the campuses of America today. To the guy responsible for transforming this university from a school of several hundred to one of several thousand. To the fellow who gladdened the heart of many a fair female, and who sharpened their observation—can spot a gold band on third finger left hand at fifty paces. To the one with an uncle who can afford to buy the fifteen books required for each course these days. Time was when professors were happy if students brought one sheaf of parchment. To the man who has completely changed the picture of college life, we dedicate this book.



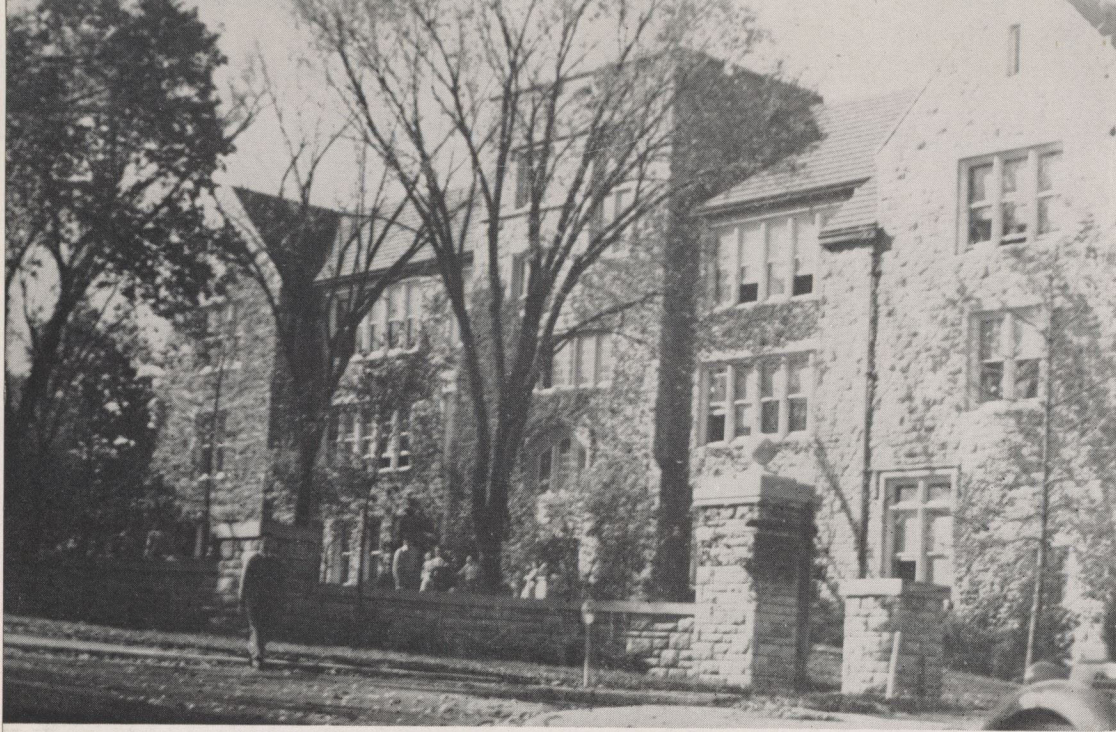
The
Administration Building





The Dental Building





The Liberal Arts Building

The Geology-Physics and Library

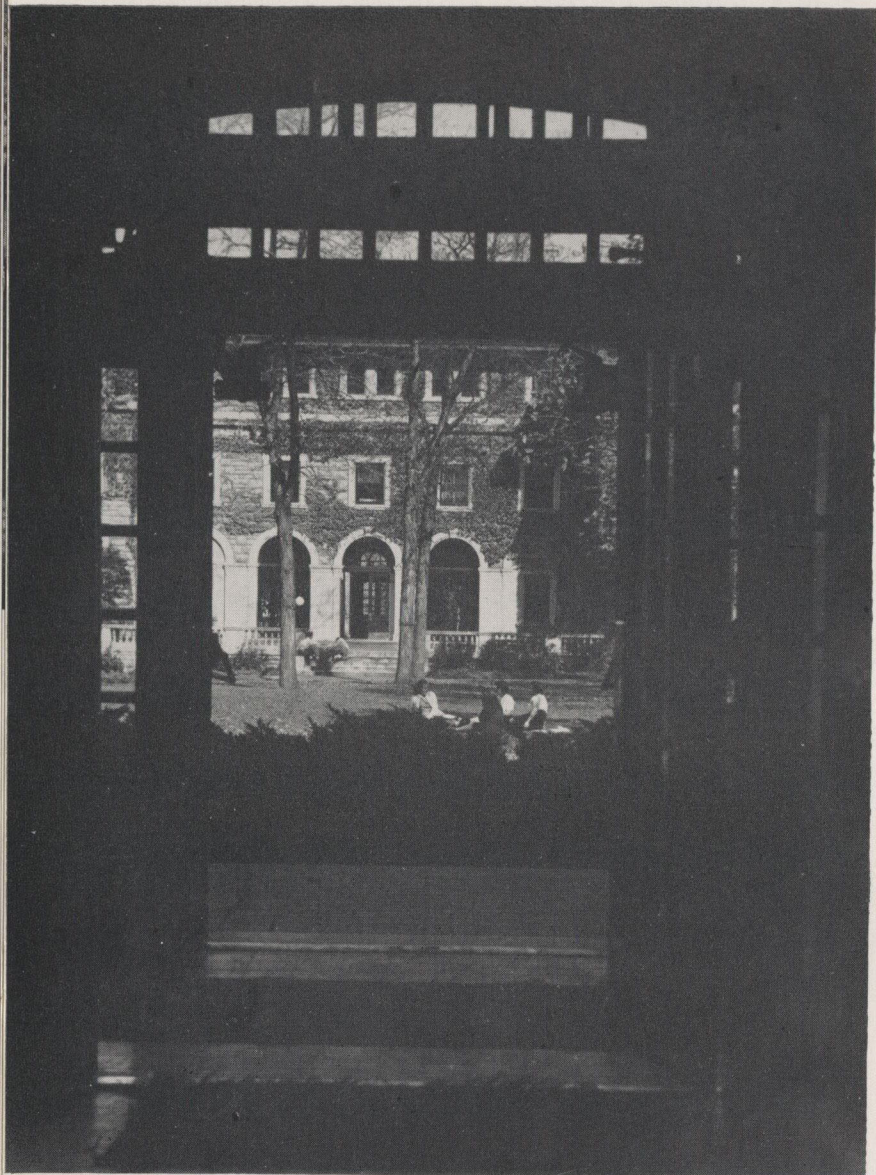




Across Campus from Rockhill

The "Three Graces"





From the
Inside
Looking Out

*The Science
Building*

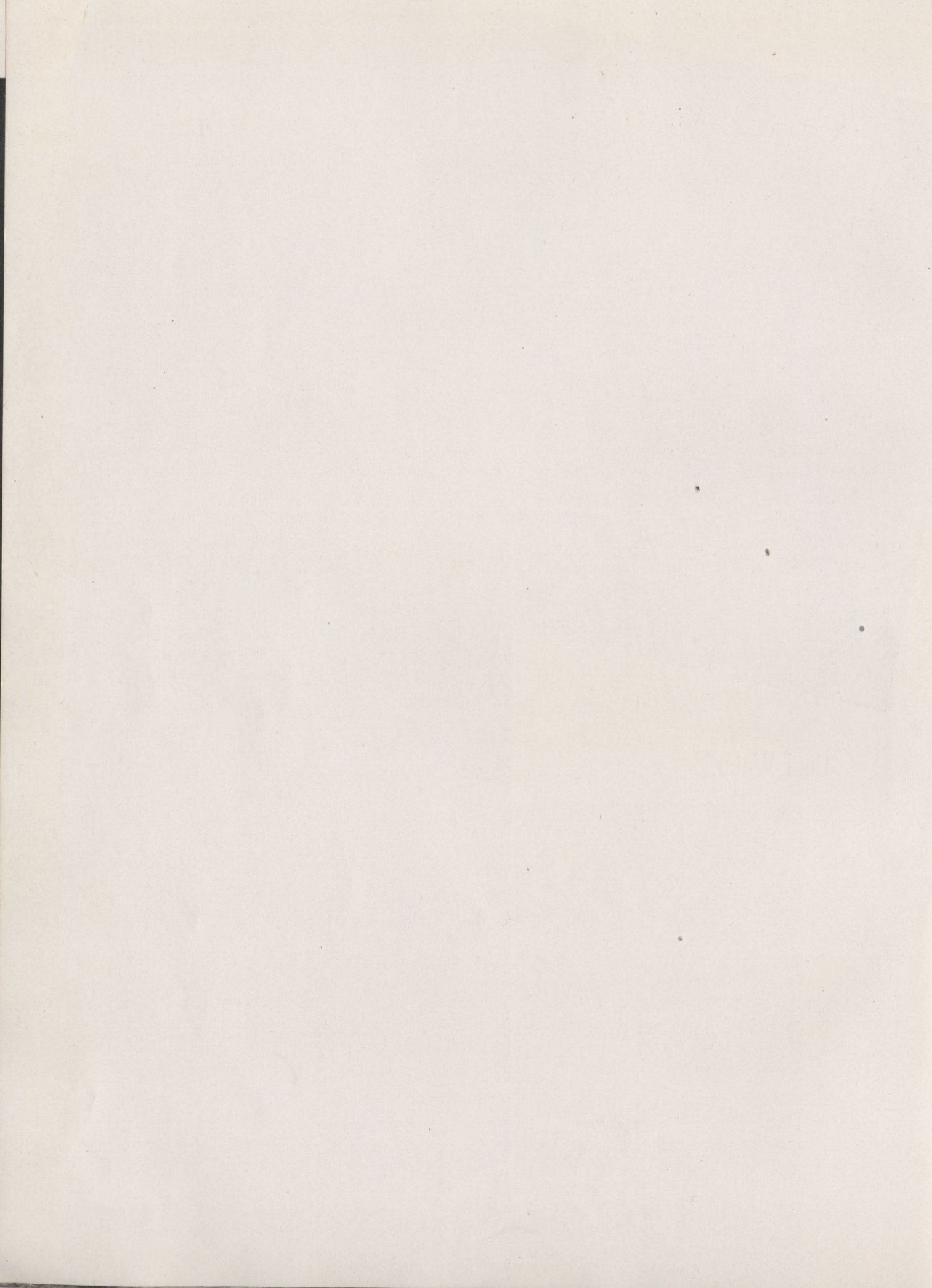




"Cool Water"

*The Swinney
Gymnasium*





B O O K

One

BOOK



THE ALL



STUDENT ASSOCIATION

MONTANA GEOGRAPHICAL SOCIETY

GOVERNMENT



Student



Betty Weiser

Officers

| FIRST SEMESTER | | SECOND SEMESTER |
|----------------|----------------|-----------------|
| Betty Weiser | President | Mel Goers |
| Hank Leiman | Vice-president | Phil Munoz |
| Nadine Shull | Secretary | Marilyn Haggard |
| Earline Miller | Treasurer | Bill Hobson |

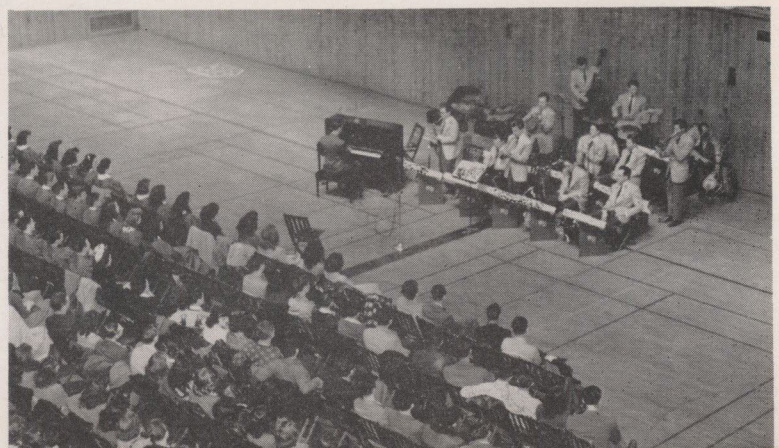
Betty Weiser, first semester, and Mel Goers, second semester, headed the Student Council, official governing body of the student body. Two representatives from each Liberal Arts class, and two men from each professional school are entitled to representation. Officers are voted on by the entire student body.

Not only are student policies decided by this group, but such social affairs as a Quad dance, October 26, a Christmas dance, December 20, a duplicate bridge tournament, November 16, the Kangaroo hop, Hobo day and weekly Friday night mixers. An award assembly was held in the spring for the students with the highest scholarship and the most extracurricular activities.

Early in December the council purchased a juke box which has furnished the music for the Friday night informal dances following the basketball games. The council also created a board of control for social functions which will supervise the entire social program of the University.

The Student Council entered the National Student Organization from the ground floor, sending delegates to the Chicago national conference and to the St. Louis regional conference to represent the student body. Faculty advisors are Miss Miriam Wagner and Dean Robert Haun.

Warren Durrett presents his interpretation of the evolution of modern dance at a convocation March 28.

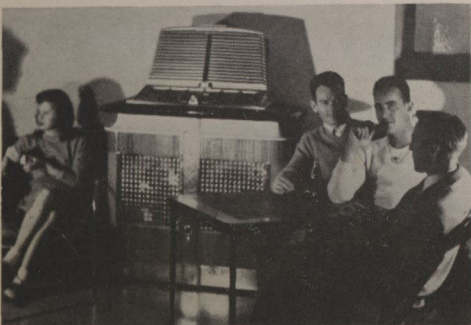


Earline Miller, treasurer; Hank Lieman, vice-president; Nadine Shull, secretary. Powell Adams and Mary Francis Scoville, senior representatives. Ronald Farmer and Mike Denney, junior representatives. Pat Grinnell and Marilyn Haggard, sophomore representatives. Bill Stansbarger and Carol Decker, freshman representatives.

Council



A bunch of the Bounders looking mighty grim at the Council sponsored annual Quad dance.



Admiring the new Juke Box are Sue Jones, Bill O'Donnell, Bruce Cross and Ed Cook.



The required four and usual kibitzer at afternoon bridge in the "Roost".

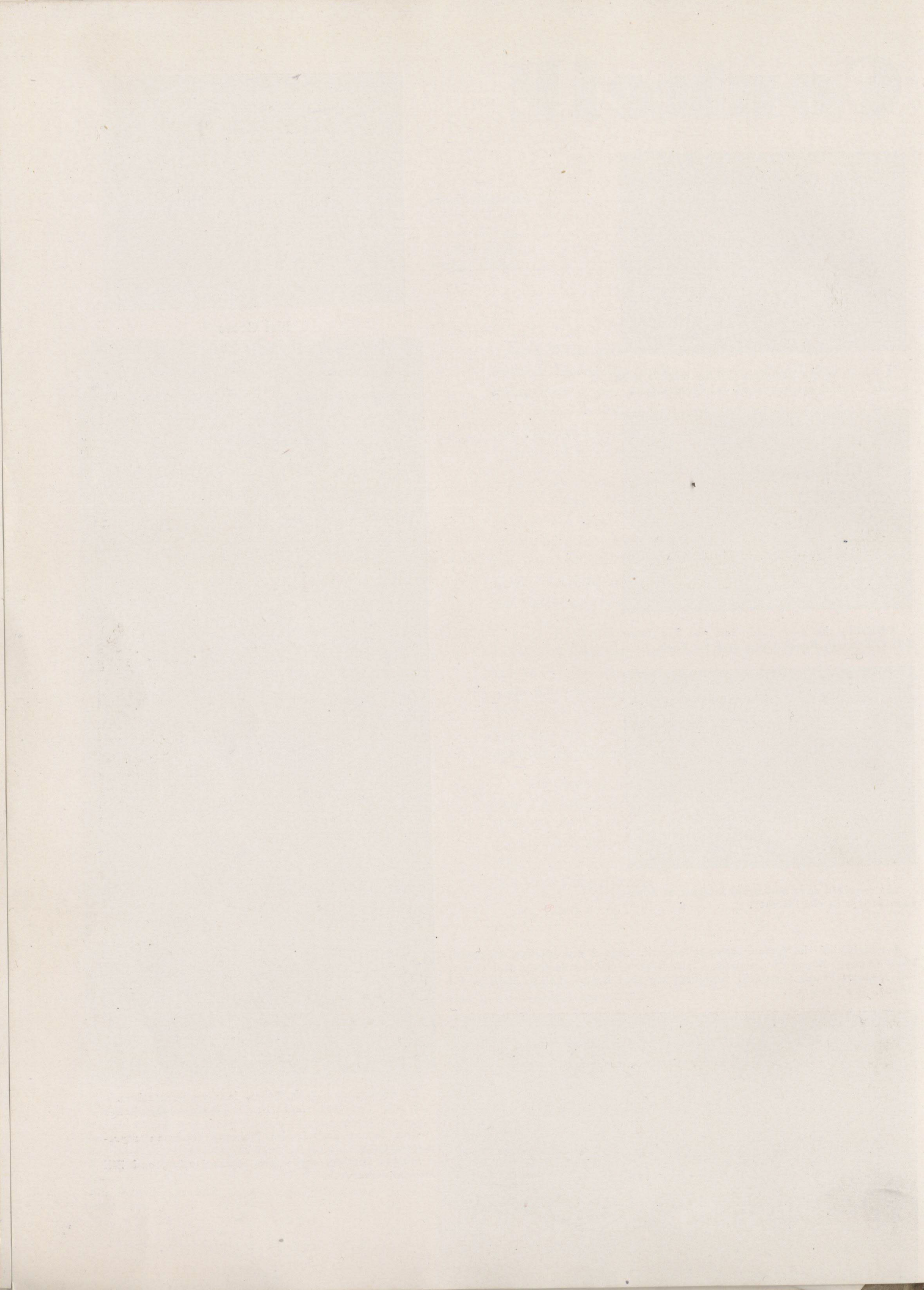
A meeting of the second semester council. Seated are Marilyn Haggard, Mike Denney, Bruce McCormick, C. C. Brown, Gladys Fetting, Mel Goers, Bill Hodson, Frank Spurlock. Standing are Don Braun, Louise Hobson, Fil Munoz, Jim Benjamin.



Mel Goers



Fil Munoz and Jack Bohm, law representatives.
 Frank Spurlock and Bruce McCormick, junior representatives.
 Don Braun and Louise Hobson, freshman representatives.
 Gladys Fetting, sophomore representative, and Bill Hodson, treasurer.



HONORS



Who's Who in America

Who's Who Among Students in American Universities and Colleges is a nationwide honor awarded to leading students on college campuses. Students must have a grade average of "C" before they are

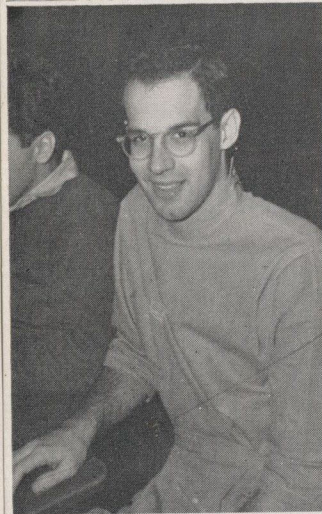
judged on qualities of leadership and character. Service to the school, campus activities, scholarship and all honorary and social organizations to which a student may belong, are considered. At this University, candidates are chosen from the four schools and submitted to the All-Student Council for approval. Members representing the Schools of Dentistry and Pharmacy must be of superior ability in their future professions.

One of the outstanding features of Who's Who is the Student Placement Service, through which students belonging to it are recommended to American employers who are seeking capable college graduates to fill responsible positions.

The student elected to Who's Who receives a gold key as a token of membership, and is awarded a special certificate of membership at the Annual Award Assembly in May.



Gordon Bennett



Haler Kennedy

Reese Mason

George Rhoades

Richard Stone

Richard T. Street

Charles Wi



Colleges

Powell Adams

George Christian

Helen Linder

Pat Dundey

Mike Denney

Earline Miller

Betty Weiser

Betty Wise

Mary Elizabeth Sneary

Nadine Shull

Mel Gores

From left to right: John Sheridan, Jay Gunnels, Sarah Elizabeth Schlect, Stan Siegel, J. O. Jarrard.

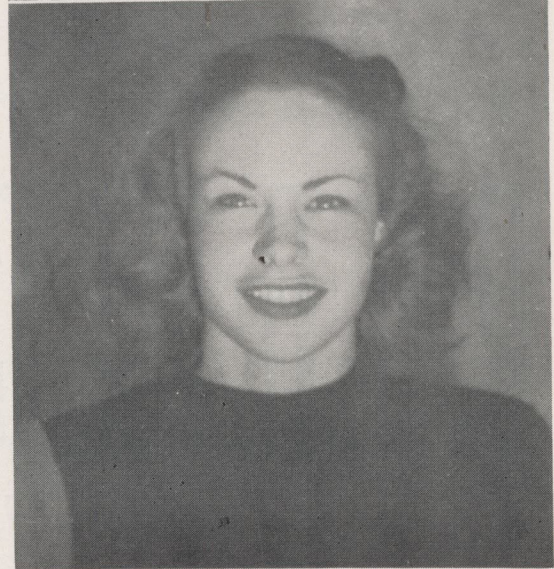
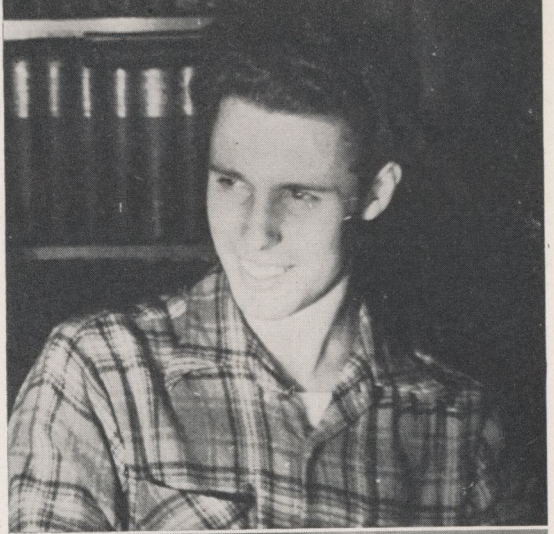


lson



PUBLICATIONS





Marilyn Haggard and Mike Denney, editors.

University News

Bob Chartrand, Gil Davis, John Keeling and Mike Denney.



Bill Hodson, Dorothy Flanders, Bob Williams and Lyle Ticknor.



Headed by Mike Denney the first semester, and Marilyn Haggard the second semester, the University News went through its renovation this year.

The staff felt an obligation to uphold the newspaper's place in the university community by publishing the ideas current in the student mind and promoting the ideals for which the University stands.

Stress was placed on making the U-News a strictly student publication, setting itself up as an organ of expression of the students themselves. From the policy published the second semester, the responsibility to the student body was explained thus: "Every student pays an activity fee each semester—a large percentage of which goes to the support of the U-News. The editor of the campus newspaper is chosen by a board of control appointed by the representative body of the students, the Student Council. Thus, each student is part owner-controller of the U-News and the editor and staff are directly responsible to these individuals which they represent."

With the increase in enrollment, and the influx of veterans on the campus, the paper was able to draw one of the most able staffs in its history. An absolute maximum of student participation in the publication was striven for. Members of the journalism class also participated in news gathering and staff duties. Miss Helen Jo Crissman acted as faculty supervisor.



Standing are Bob Curry and Cal Lakin. Seated are Herb Holt and Elwood Jones.

FIRST SEMESTER
EDITORIAL STAFF

Editor.....Mike Denney
Assistant Editors.....Frank Spurlock
Bob Chartrand
Feature Editor.....Dorothy Flanders
Copy Editor.....Marilyn Haggard
Technical Editor.....Don Jones
Sports Editor.....Powell Adams
Sports Staff.....Esther Gloe, Al Boersch,
Ronald Hoff
Contributors.....Doris Cranfill,
Helen Linder, Charmaine Gile, Mildred
Dahlstrom, Marian Crain, Louise Hobson,
Don Jennings, Mildred Mathis,
Adoree Junqua, Betty Matchette, Harry
Wigham, Bill Newby, Maxine Mayes,
Betty Bogue, Paul Orloff, Roy Larson,
Joette Pecararo, Bob Stanton, Elwood
Jones, Don Benson, Audrey Rabin, Elizabeth
Davis.
Circulation Manager.....Margaret Byrne
Faculty Advisor.....Helen Crissman
Business Manager.....Earline Miller
Advertising Managers.....Bill LeRoy,
Don Merrill

SECOND SEMESTER
EDITORIAL STAFF

Editor-in-Chief.....Marilyn Haggard
Feature Editor.....Dorothy Flanders
News Editor.....Bill Hodson
Copy Editor.....Herb Holt
Technical Editor.....Margaret Byrne
Art Editor.....Bob Stanton
Sports Editor.....Bob Williams
Sports Staff.....Frank Spurlock,
Esther Gloe
Makeup Editor.....Lyle Ticknor
Editorial Advisors.....Mike Denney,
Bob Chartrand, Gil Davis
Professional Schools.....Stan Siegel,
Art Lindquist
Business Manager.....Bob Curry
Advertising Manager.....Jack Ripple
Circulation.....Lois Bernard, Maxine Cloys
Contributors.....Lyle Ticknor,
Harry Wigham, Bronck Labunski, Cal
Lakin, Mildred Dahlstrom, Don Jones,
Joette Pecararo, Ronald Hoff, Elizabeth
Davis, Al Zimmerman, Bill Daily,
Adoree Junqua, Ronald Farmer.
Photographer.....Elwood Jones
Faculty Advisor.....Helen Crissman

Frank Spurlock, Marilyn Haggard and Bob Chartrand.

Bill Leroy, Bob Stanton and Earline Miller.

Don Jones and Margaret Byrne, Powell Adams seated.



The Kangaroo

What a year! To start it off, the Kangaroo and Bushwhacker surprised everyone with an elopement—probably a marriage of convenience. Next the enrollment surpassed the expectations of all concerned. Classes had to be held in the auditorium. The Law school spread itself thinly over the entire campus including the science building. Overflowing lab sections led to the construction of temporary buildings to house the dentists and pharmacists. The Student Council went all out for entertaining its numerous subjects. The U-News went on an editorial spree with a “reform the universe” campaign. Everything pointed to a complicated, but highly interesting year.

Alums and newcomers of the Arts will hardly recognize this Kangaroo—either by comparison with the bygone humor mag or even by comparison with last year’s annual, 150 pages to some 300. Dentists will frantically wonder what has happened to their traditional Bushwhacker.

Due to the size of the book, no attempt was made to closely knit the five sections with a central theme. However on the main division pages, students are shown looking ahead to the new buildings of their respective schools. It is certain that with the increase of enrollment and the end of the war, those

long anticipated buildings will soon follow to complete the scheme of the campus. This is probably the main interest of the students, faculty and administration this year.

The Kangaroo was divided into books according to the schools in the university. Each “book” retains the name of the school’s former annual.

This presented quite a problem because the Liberal Arts school has never had an annual by any name other than “Kangaroo.” It was impossible to use the same name for a section and the title of the book, too. Therefore the editor fell back on the name used in the past for the senior and final edition of the old “Kangaroo.”—the “Crataegus.” Each school had its editor responsible for the material required. One thing that eased the task of being editor-in-chief was that the dental editor, Dick Street, assumed full responsibility for his section, including copy and makeup. Thanks are duly and liberally awarded.

This is usually the page in which orchids are tossed promiscuously about to all members of the staff—a bit boring to the reader. This year’s staff has been most adequate. They have performed an extremely difficult task well. Those rare flowers are particularly awarded to the photographers each and everyone, to the assistant and photography edi-

Betty Weiser, editor.



Mary Elizabeth Snearly, business manager.



STAFF:

Assistant editor.....Maxine Mayes
 Photography editor.....Marilyn Haggard
 Law editor.....Bob Schellhorn
 Pharmacy editor.....Mel Goers
 Dental editor.....Dick Street
 Photography staff...Gil Davis, Stan Bovos, Ronald Farmer,
 Elwood Jones, Cal Lakin
 Art Staff.....Helen Brenner, Bob Stanton, George Rhodes
 Senior editor.....Helen Linder
 Class editors.....Barbara Ekstrum, Helen Woodruff
 Departmental editor.....Esther Gloe
 Social editor.....Earline Miller
 Feature editor.....Powell Adams
 Men's sports.....Bob Chartrand
 Women's sports.....Diane Kraus
 Makeup editor.....Betty Bogue

Marilyn Haggard and Maxine Mayes.



Mel Goers and Bob Schellhorn.

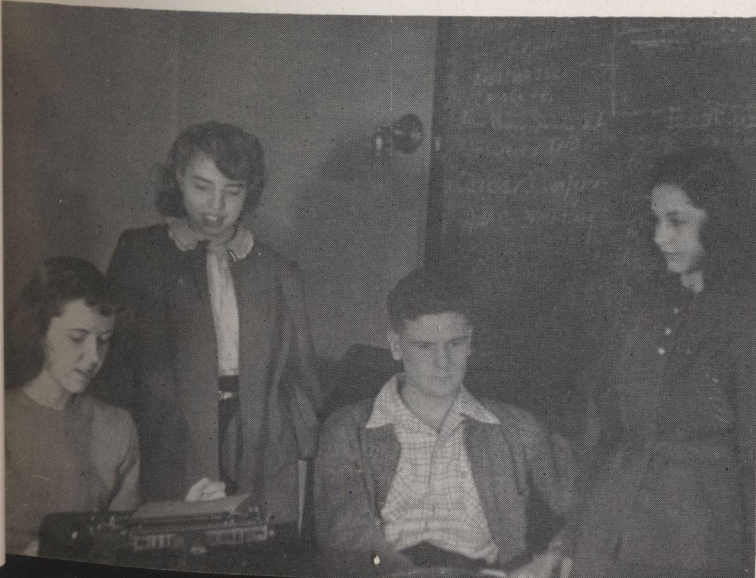


Earline Miller, Powell Adams, Helen Linder and Esther Gloe.



Right below: Elwood Jones, Gil Davis, Cal Lakin, Ronald Farmer and Stan Bovos.

Left below: Diane Kraus, Barbara Ekstrum, Bob Chartrand and Mary Frances Woodruff.



B O O K

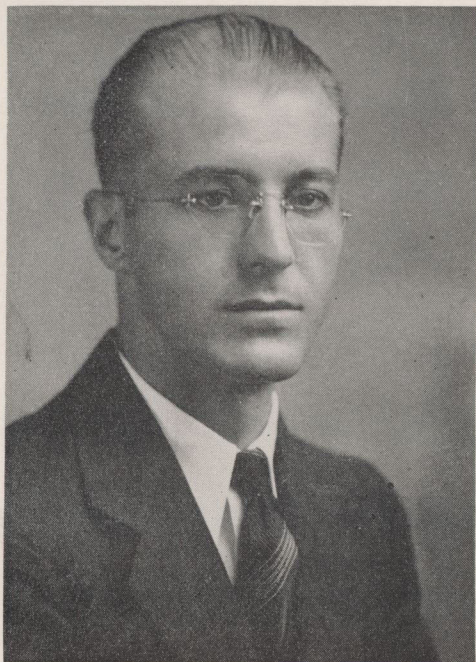
Three



T H E



P A N D E X



Rudolph Heitz
Present Dean of Law

This year saw a change in the leadership of the School of Law of the University of Kansas City. Dean Benjamin F. Boyer left us to become Dean of the School of Law of Temple University in Philadelphia. Dean Boyer, who had been a member of the faculty here since 1937 and dean since 1940, received his Bachelor of Law degree from Missouri university in 1928. During 1940-41 he was a Special Graduate Fellow at Columbia University Law school where he received the LL.M. degree.

His graduate research was in Contracts and was supervised by Edwin W. Patterson, Cardozo professor of Jurisprudence at Columbia. Called to active duty in the armed forces in the latter part of 1941, he attained the rank of colonel and served more than three years at the Command and General Staff school at Fort Leavenworth.

Rudolph Heitz, who became dean on February 1, 1947 at the end of the first semester, is an associate of the law firm of Lathrop, Crane, Sawyer and Righter; and former part-time member of the faculty of the School of Law. Dean Heitz, who received his Bachelor of Law degree from Missouri university in 1934 and his LL.M. from the University of Michigan in 1942, has served as an advisor of the sub-committee on Suggestion and Plans for the Missouri Supreme Court, and is a member of the Committee on Practice and Procedure for that Court.

Deans

Benjamin F. Boyer
Former Dean of Law





John M. Speca
Assistant Professor of Law



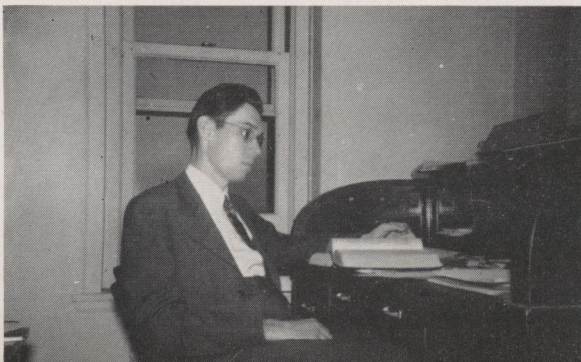
William Prewitt Ewing
Assistant Professor of Law



Dean Rudolph Heitz
Dean

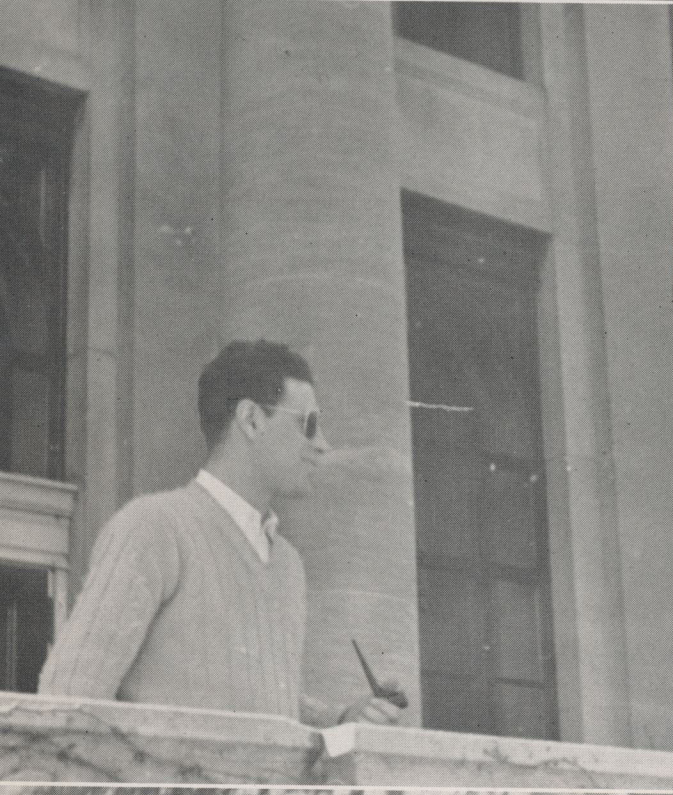
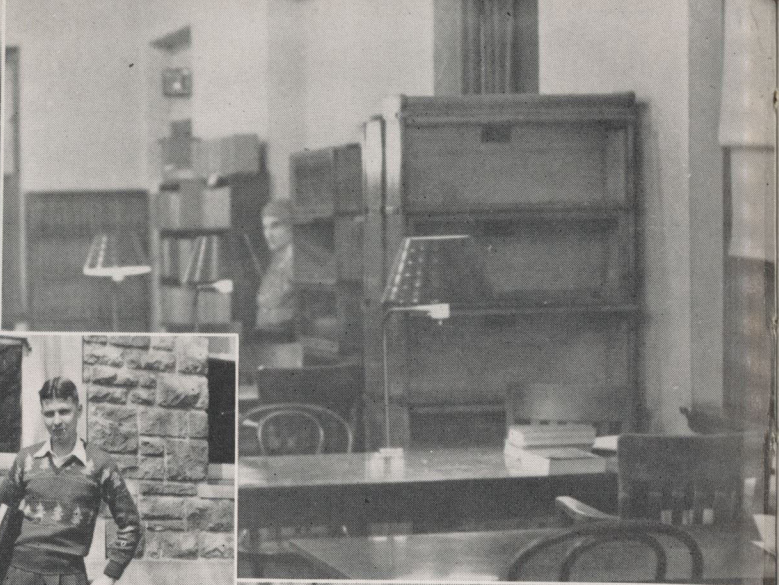


John Scurlock
Instructor in Law



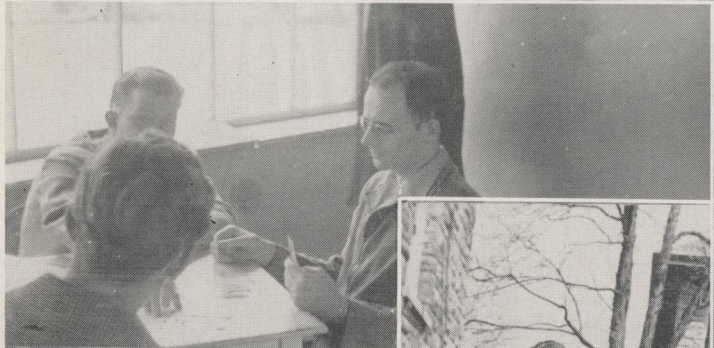
Edward M. Ball
Instructor in Law



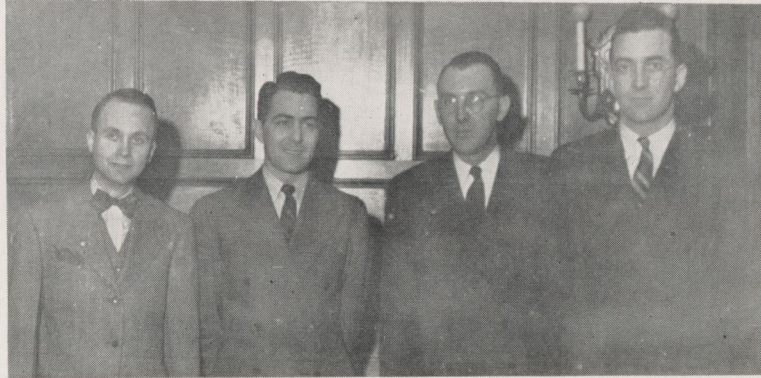


CLASSES





LAW



From left to right: Jay Gunnels, Walt Lethem, E. B. Bunch, B. L. Parker.

Officers

| | |
|---------------------|---------------|
| President..... | Bob Bunch |
| Vice-president..... | B. L. Parker |
| Secretary..... | Jay Gunnels |
| Treasurer..... | Walter Lethem |

This year, in addition to their duties of presiding over all activities, the officers of the School of Law devised other tasks to keep them busy. Believing that the students needed more opportunities of getting acquainted with each other, the officers gave a Law school mixer at the start of the year. This dance was so well received that it is hoped it will become an annual event.

During the course of the year, the student body decided that the charter of the school needed revising. As a result of this decision, Vice-president Parker was appointed chairman of a committee to formulate a new one. When the final draft of the new charter was completed, it was submitted to the Student Council, and was approved without delay.



Milton Adams A. L. Allen James Anderson J. W. Arnold James W. Benjamin
 Theodore Benney Vivian Bersuch Jack Bohm James A. Broaddus E. B. Bunch
 N. Cameron Adam Campbell Ruby Campbell John Carmichael Delmar Caywood
 James Coffey Kenneth Cohn C. Edward Cook Charles J. Cools Mrs. Albert Copaken
 John C. Cox George C. Denney Don Ebling Tom Fitzgerald

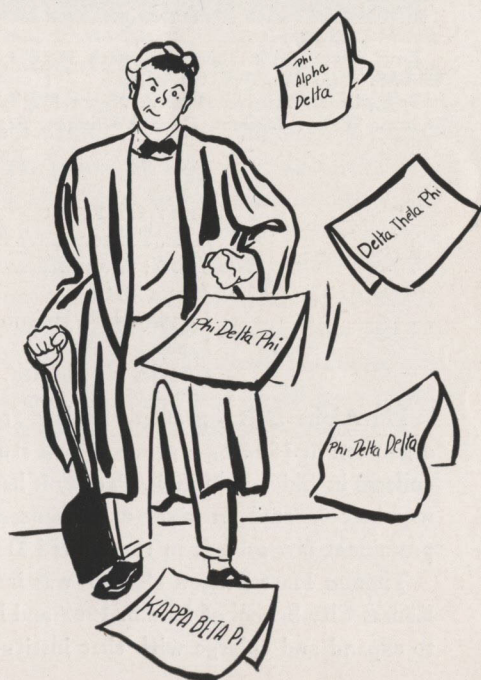


Marshall Geller Bernard Gorman Graydon Graham Robert Graham Eugene F. Gray
 William G. Gray Jay Gunnels John Hamilton Edward Hansen R. H. Heilbron
 Nolan Hepburn Clement Hessel Richard Hornbeck Carl A. Hummel F. L. Judson
 Gerald Kiser Roy A. Larson W. R. Lethem R. F. McIntire D. E. Mauntz
 Paul Morris Filbert Munoz Bill O'Brien Lloyd Monson



| | | | | |
|------------------|----------------|--------------------|------------------|----------------|
| Rosemary O'Leary | Louis Pener | John Phillips | Sylvester Powell | L. W. Rayborn |
| Jimmy Robinson | J. W. Rosacker | Jack Schnackenberg | John Sheridan | Daniel Shiel |
| J. D. Shine | Freda Schirley | Stanley Siegel | Wayne Simmon | Phil Slaughter |
| J. E. Smith | R. J. Southall | Robert Staiger | Arthur Terrel | Joseph Walker |
| R. M. Welton | | Norman Wood | | John Yeaman |

PROFESSIONALS



Phi Alpha Delta



Row four: Jack Bohm, Kenneth Brooks, Bob Bunch, William Cameron, Jay Gunnels.

Row three: Edward Hansen, Nolan Hepburn, Lynwood Judson, Walter Lethem, Donald Mauntz, Paul Morris.

Row two: Filbert Munoz, B. L. Parker, Ralph Parks, Sylvester Powell, Jr., John Sheridan, Phil Slaughter.

Row one: L. D. Shine, J. E. Smith, Joseph S. Walker, Norman Wood, John Yeaman, Charles E. Fiddler.

Officers

FIRST SEMESTER

B. L. Parker..... Chief justice
 Filbert Munoz..... Vice-justice
 James D. Shine..... Clerk
 Lynwood F. Judson..... Treasurer
 Frederick Azar..... Marshal
 Charles E. Fiddler..... Faculty advisor

SECOND SEMESTER

Bill Cameron
 Jerry Sullivan
 Galen Knowlton
 Warren R. Anderson
 Walter Lethem
 Charles E. Fiddler

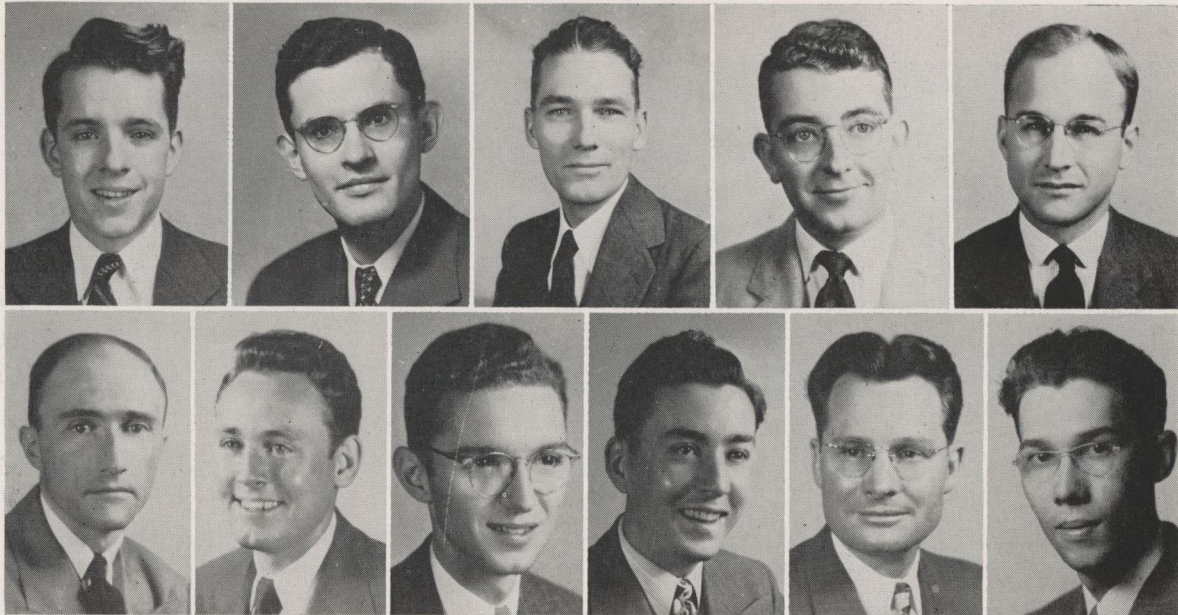
Phi Alpha Delta, professional law fraternity, was organized in 1898 by a group of law students of two colleges in Chicago, Illinois. Today it has over 20,000 members located in sixty-one chapters at all the prominent law schools in the United States.

Thomas Hart Benton chapter was installed at the Kansas City School of Law in 1907 and has continued to expand and enlarge with that institution, moving

along with it when absorbed by the University.

This year, Thomas Hart Benton chapter had the honor of playing host to the 26th biennial convention of Phi Alpha Delta, which was held at the President hotel during the New Year season. The chapter was well represented at this conference by B. L. Parker and Filbert Munoz.

Phi Delta Phi



Row two: James W. Benjamin, Tom Fitzgerald, Bernard Gorman, Richard H. Heilbran, John Phillips.

Row one: J. N. Rosacker, Jack Schnackenberg, R. G. Southall, Robert Staiger, Art Terrel, John Scurlock.

Officers

| | |
|----------------------|----------------|
| Magister..... | Arthur Terrel |
| Exchequer..... | Bill McLeese |
| Historian..... | William Hutton |
| Clerk..... | Bernard Gorman |
| Faculty Advisor..... | John Scurlock |

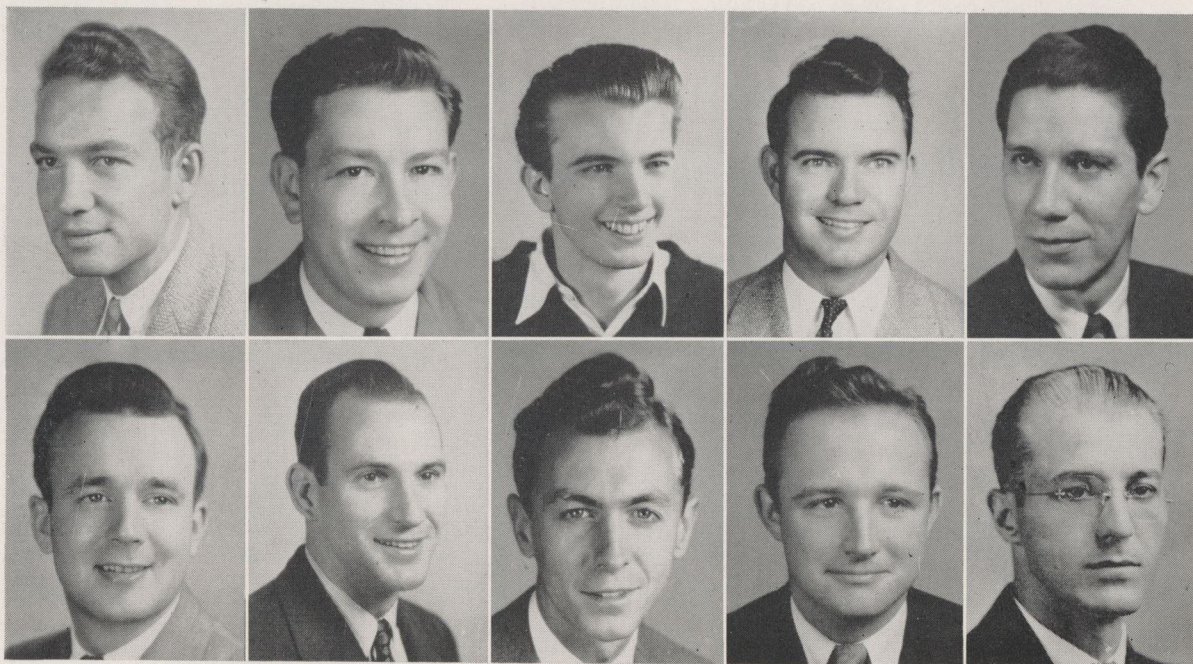
Phi Delta Phi is an international professional Greek letter law fraternity founded in 1869 at the University of Michigan by eight charter members. This was the first founded professional fraternity in the United States. It has grown from the original eight members till today it has over 34,000 members located in sixty-two chapters or Inns of the leading American Law schools and forty-seven alumni chapters or Barrister Inns, located in the larger cities. Kansas City has a Barrister inn. It is the oldest and largest of the professional law fraternities.

For seventy-seven years Phi Delta Phis have found a need in the legal profession for the advancement of high scholarship and culture, and in the process, an amazingly large percentage of them have attained unusual prominence in American affairs. Among its

distinguished alumni members are the following: Franklin Delano Roosevelt; Theodore Roosevelt; William Howard Taft; Charles Evans Hughes; Wendell Willkie; Benjamin N. Cordoza; Dean Emeritus Edward N. Ellison; Professor Emeritus Elmer N. Powell; Dean Benjamin F. Boyer, Tiedeman inn, class '28, now Dean, School of Law, Temple University.

Hinton inn, the University of Kansas City chapter, was organized in 1942. Hinton inn maintains the high standard set by Phi Delta Phi. From the beginning it has stood among the leaders in scholastic achievements in the Law school. Its members participate in Law school as well as all-school functions. In selection of its pledges, emphasis is placed upon qualities denoting scholastic and leadership abilities.

Delta Theta Phi



Row two: Milton Adams, Alvie L. Allen, Theodore Benney, M. B. Clark, Cecil L. Holt.

Row one: Gerald Kiser, R. F. McIntyre, Lloyd Monson, R. M. Welton, Rudolph Heitz.

Officers

| | |
|-----------------------------|--------------------|
| Dean..... | Cecil Holt |
| Vice-dean..... | Clyde Howe |
| Clerk of the rolls..... | Ted Benney |
| Clerk of the exchequer..... | Lloyd Monson |
| Master of the ritual..... | Bob Myer |
| Bailiff..... | Joe Harrington |
| Tribune..... | George Berry |
| Faculty adviser..... | Dean Rudolph Heitz |

The Delta Theta Phi Law fraternity, as such, came into existence on September 26, 1913, after duly appointed representatives of three law fraternities (Delta Phi Delta, founded 1901; Alpha Kappa Phi, founded 1902; Theta Lambda Phi, founded 1903) conferred and resolved themselves into one fraternity under the name of Delta Theta Phi Law fraternity. Since the entire membership of each became members of the new Delta Theta Phi Law fraternity, the fraternity really dates its origin from 1901.

Those Greek letters were chosen because they embody one letter from the former name of each of the three constituent fraternities, and because it was believed at that time that no fraternity with a similar name existed.

Now the Kansas City School of Law has become the School of Law of the University of Kansas City,

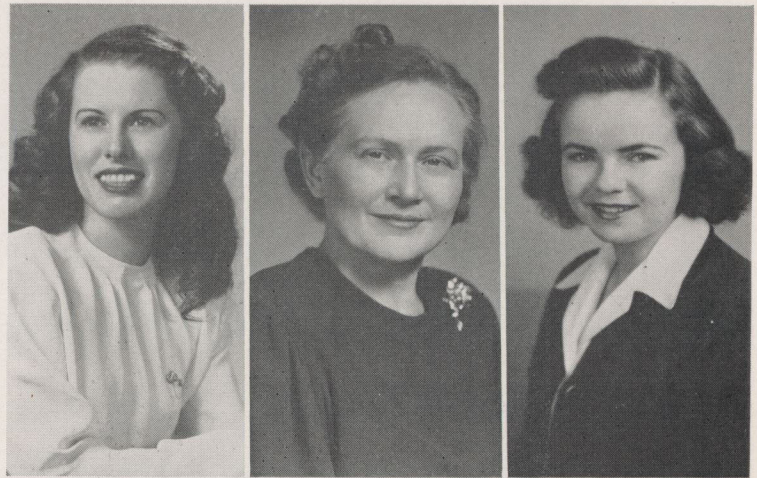
and Snyder senate of Delta Phi Law fraternity has moved along with it. After a period of inactivity during the war, the senate is again flourishing at the University, due in a large part to the work of the greater Kansas City alumni senate and Cecil Holt, the only active member when the school year began. The senate is indeed proud to count as a brother Delta Thet, Dean Rudolph Heitz of the Law school. He is a member of Bliss senate, University of Missouri.

Snyder senate is pardonably proud of its record at the old Kansas City School of Law, and it seems certain that an even brighter future is in store for Delta Theta Phi now that it is back in full swing at 5100 Rockhill Road. The fine cooperative spirit of Phi Alpha Delta and Phi Delta Phi and of former Dean Boyer, Dr. Decker and the faculty is gratefully acknowledge by Snyder senate.

Kappa Beta Pi

Officers

| | |
|----------------------|----------------------|
| Dean | Dorothy Jeanne Allen |
| Registrar | Gladys Donovan |
| Associate dean | Betty Schmid |
| Chancellor | Freda Schirley |
| Marshal | Ruby Campbell |



Top row: Dorothy Jeanne Allen, dean; Gladys Donovan, registrar; Betty Schmid, associate dean. First row: Freda Schirley, chancellor; Ruby Campbell, marshal.

Kappa Beta Pi, the first legal sorority in the world, was founded at Chicago-Kent College of Law on December 15, 1908, by ten women law students and, since that time, has expanded to more than fifty chapters throughout the United States, Canada, England and France.

With the installation of Alpha Mu chapter at Osgoode Hall Law school, Toronto, Canada, on November 12, 1925, Kappa Beta Pi became international in scope, and when, on November 26, 1927, Alpha Omicron chapter was installed at the University of Paris, Kappa Beta Pi became the first Greek letter organization to install a chapter on the European continent. Beta Alpha chapter was chartered at London, England, on July 24, 1940.

Charters are issued only in schools approved by the American Bar association and the Association of American Law schools. Kappa Beta Pi is affiliated with the Inter-American Bar association and is a member of the Professional Panhellenic association.

Theta chapter was installed at the Kansas City School of Law on January 2, 1917, with three students and one alumna initiated as charter members. Since that time ninety women have been initiated into Theta chapter, seven of whom have now joined Memory chapter.

Members of Theta chapter can be found in all parts

of the world—one having taught at Yenching university in Peiping, China, and another having served at the war trials in Germany. During the war, two members of Theta served on National boards by appointment of the late President Roosevelt.

Theta has furnished Grand chapter with two Grand Deans—Lenore Simpson and Bernice Wesner, and our present Grand Chancellor, Fairlee Tegarden, also comes from Theta chapter.

Several years ago a loan fund, available to women enrolled in the School of Law, was established by Theta chapter at the University of Kansas City.

Phi Delta Delta



Second row: Vera Jones, Patricia L. Harris, Helen Wilson.
First row: Gladys Hodgkinson, Eileen Fleming, Hiltrude McCampbell. Law Students not in picture: Margaret Bryant, Persis Perry, Mrs. R. L. Hays, and Virginia Welch.

On November 11, 1911, five women students in law at the University of Southern California, frontier breakers in the realm of the profession, banded together to promote the highest standard of professional ethics and culture among women in this and other law schools and in the legal profession at large. The passage of thirty-five years since 1911 has seen the growth of Phi Delta Delta from five to twenty-three hundred members. She now has chapters in every important law school in the United States, with seven associates in foreign countries.

The fraternity was the first women's organization to join the Inter-American Bar association, and is a member of the Legal Panhellenic council. Chapters may be established only in schools or colleges of law which are members of the American Law school association or which are on the list approved by the American Bar association.

Members of the fraternity are giving serious thought to ways and means of establishing and maintaining peace throughout the world, and to this end, arrangements have been made that Phi Delta Delta will have a permanent pass for an official observer to attend all open sessions of the United Nations, through whom information will be received and any worthwhile ideas on world peace may be presented to the proper officials.

Psi chapter was organized at the Kansas City School of Law on May 2, 1925. The chapter maintains the standard of excellence set by Phi Delta Delta. Every initiate must have attained a grade of at least fifteen per cent higher than the passing grade of the law school. Many prominent members have achieved professional excellence in Kansas City and in other cities throughout the United States.

FUN



George Day



Judge James M. Douglas, guest speaker.

The Washington Day banquet, an annual event in the history of the School of Law, was held this year at the Hotel Muehlebach on the evening of Friday, February 21st. Presiding over the affair as toastmaster was president of the School of Law, Bob Bunch, who introduced the different distinguished guests. Present at the speaker's table were Dean Robert Mortvedt of the Liberal Arts college; Dr. Theodore Ditt-rich, dean of the School of Pharmacy; Judge Samuel

Dew of the Kansas City Court of Appeals, and Roscoe VanValkenburgh of the alumni association.

Dean Emeritus Edward D. Ellison, member of the chartering group of the School of Law, introduced the guest speaker, Judge James M. Douglas of the Missouri Supreme Court whose address concerned the adoption of a new code in this state, the first since 1849. Giving his talk the title of "The Missouri Revolution—In Law", Judge Douglas first rapidly

Bob Bunch, toastmaster.



Washington Banquet



The speaker's table.

sketched the scene as it existed here in 1849. Then by means of graphic illustrations he pointed out just how inadequate a code devised at that time could be under present day circumstances, and how the new code will lead to a more efficient administration of justice.

He concluded by mentioning prominent men who had formulated this code, one of whom was our own Dean Heitz, a member of the Committee on Practice

and Procedure for the Missouri Supreme Court. Another man whose work on the code was mentioned as invaluable was Charles Carr, an instructor in law at the University.

It was recalled at this 39th annual banquet of the School of Law, that a student speaker for the gathering in 1925, whose name was Harry S. Truman, is now President of the United States.

Judge Douglas.



FOR
GOOD FUN
EXERCISE
RELAXATION
FINE FOOD

Come to the
AIR-CONDITIONED
PLAZA BOWL

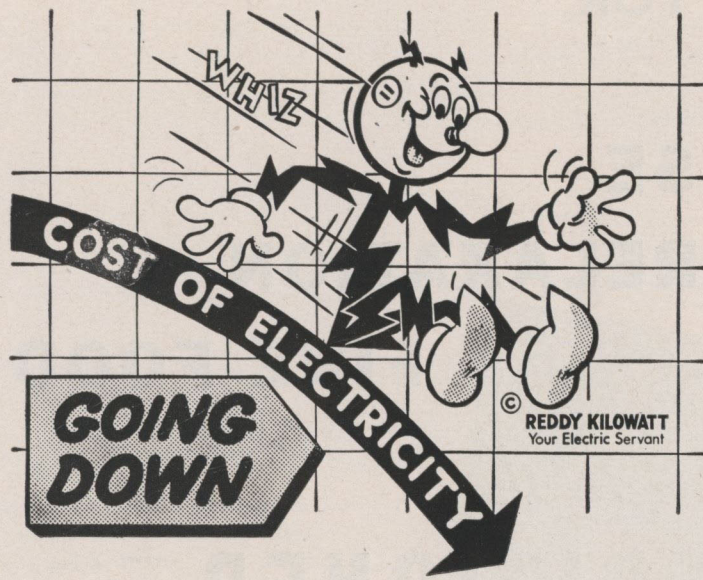
•
32 PERFECT BOWLING ALLEYS
THE BEST YEAR-ROUND SPORT

•
ALWAYS A GOOD MEAL IN OUR
DINING ROOM AND LOUNGE

430 Alameda Road

On the Plaza

LOgan 6656



For the fifth time in 23 years
the price of your electric service
has gone down. This reduction was
made possible through sound
business management and
planning through the wider use
of electricity.

Kansas City Power & Light Company

PLA-MOR

Ballroom

Arena

Roller Rink

Ice Skating

Ice Hockey

Billiards

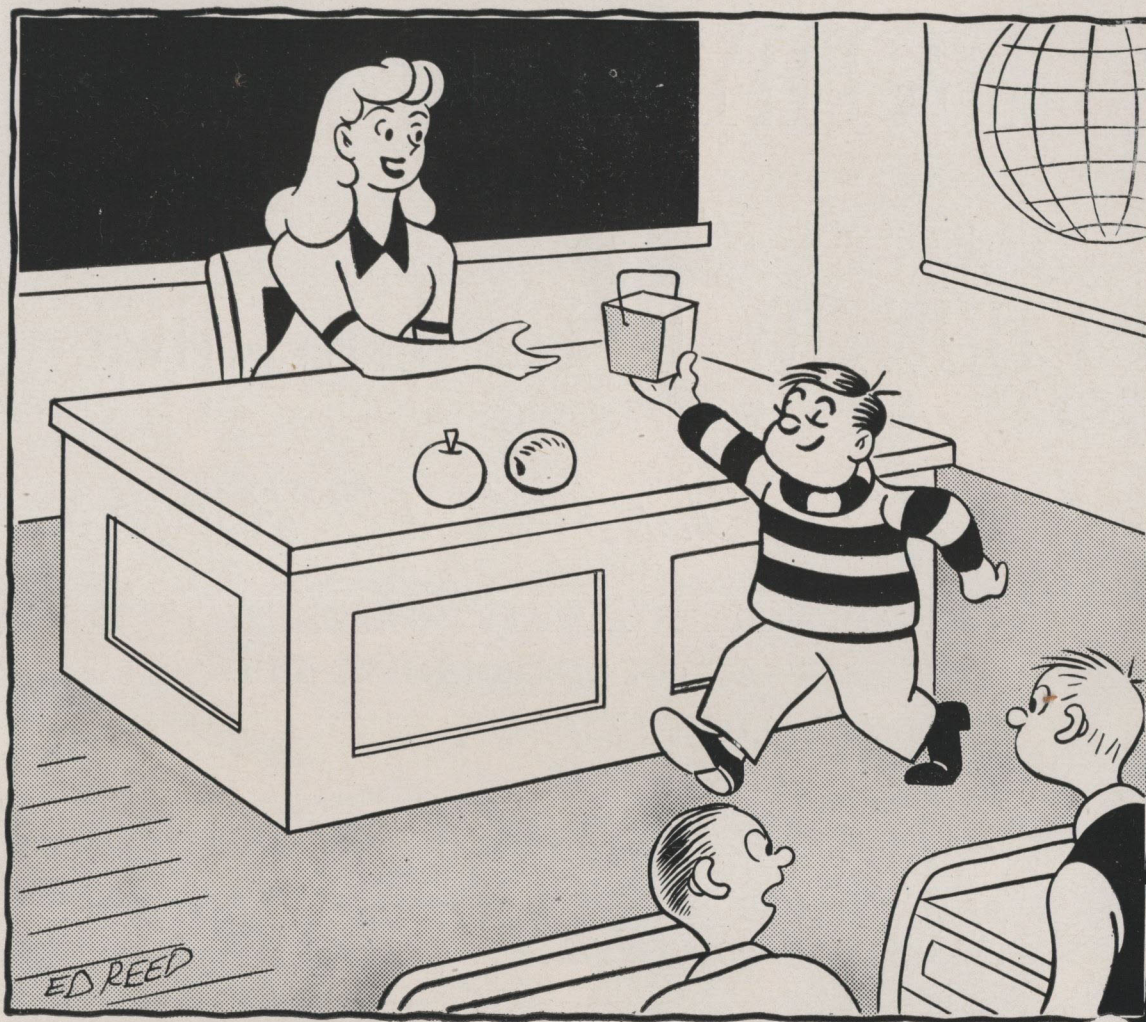
Bowling Alleys

Coffee Shop

PLA-MOR CO.

3142 Main Street

VAentine 7844



A good rule for the
Class of '47
to follow through life
with congratulations from

Franklin XX
Sealtest ICE CREAM

COUNTRY CLUB PLAZA AND THE COUNTRY CLUB DISTRICT

A Team That Is Hard To Beat

- TEAM WORK IS ALWAYS IMPORTANT.
- IT PAYS OFF ON THE WINNING SIDE OF THE LEDGER.

The Country Club Plaza offers easy convenient shopping to the thousands of home owners and residents of this area. It is a model for the entire nation, in the Country Club District you have the finest residential living in America. You are guaranteed home protection by restrictions through the years.



J. C. NICHOLS

Realtors

Developers of the Country Club District and Plaza

310 WARD PARKWAY

LOGAN 3456



Burger-Baird has been producing quality engravings and attractive layouts for yearbooks for over 30 years. Let a Burger-Baird representative help you work out your plans for your 1948 yearbook.

BURGER-BAIRD ENGRAVING COMPANY

KANSAS CITY, MISSOURI

Carter Jewelry

*distinctive gifts
diamonds*

3114 MAIN STREET
KANSAS CITY 2, MISSOURI
VA. 5062

BAILEY STUDIO

"Photographs of Distinction"

629 Brookside

HA 5008

COMPLIMENTS OF

Country Club
DAIRY

GREEN JEWELRY CO.

Middle West Headquarters for
FRATERNITY and SORORITY JEWELRY
Manufacturing Jewelers for the following
University of Kansas City Organizations:

| | |
|-------------------|-----------------|
| Sigma Alpha Iota | Tau Kappa Nu |
| Psi Omega | Bounders |
| Delta Sigma Delta | Phi Delta Delta |
| Phi Delta Phi | Alpha Phi Omega |
| Kappa Beta Pi | |

GREEN JEWELRY COMPANY

Pins - Rings - Crested Gifts - Bids - Stationary
1016 Walnut 5th Floor VI 6191

GATE CITY PETROLEUM CO.

FUEL OIL
FOR ALL TYPE BURNERS

**AUTOMATIC
DELCO HEAT**

215 E. 20th

USE THE
BOSWORTH VISUAL
BOOKKEEPING
SYSTEM

Looking Forward

UNITEK is looking forward with the satisfaction of aiding a profession that is restoring normal usefulness and appearance to thousands of otherwise handicapped children. In so doing, we offer the Orthodontists only the finest quality in the following precision stainless steel attachments:

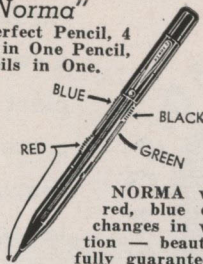
- ★ Anterior Attachments
- ★ Posterior Attachments
- ★ Universal Brackets and Attachments
- ★ Band Material and Contoured Blanks
- ★ Precision Stainless Steel Wire & Lock Pins
- ★ Chin Caps, Traction Bars, and Arches

UNITEK VERSATILE SPOT WELDER

Write for our new catalogue and price list.

Unitek Division
Consolidated Engineering Corporation
620 N. Lake Ave., Pasadena 4, Calif.

"Norma"
The Perfect Pencil, 4
Colors in One Pencil,
4 Pencils in One.



NORMA writes black, red, blue or green — changes in writing position — beautifully made, fully guaranteed—has protective eraser and contains magazine carrying 1 dozen assorted leads of standard thickness.

No. 104 Chrome Metal \$4.50, No Tax
No. 204 Monel Metal \$5.00, No Tax
No. 304 10kt. Rolled Gold \$7.50
Plus Fed. Tax

Schooley

PRINTING
and
STATIONERY

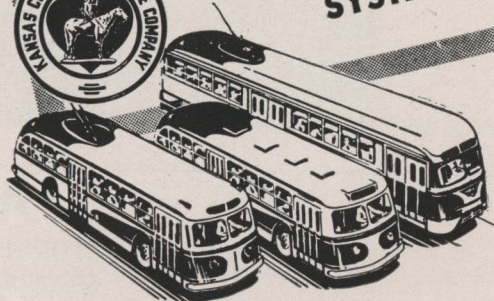
1434-36 WALNUT

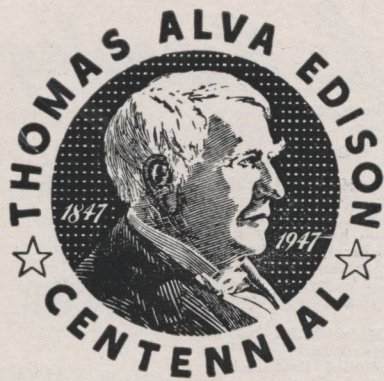
Yours for Sport
R.S. Elliott ARMS CO.
1508-10 GRAND AVE. KANSAS CITY, MO.

THE LIFESTREAM

of the
COMMUNITY

is its
**TRANSPORTATION
SYSTEM**





On September 4, 1882, just 65 years ago, Thomas A. Edison threw a switch in New York City, and his first commercial electric power plant began its long career of service. Never once did business managed electric companies lose sight of Edison's basic principle: "encourage the ever wider use of electric service and sell it at the lowest possible price." Today, the average customer is getting twice as much electricity for his electric dollar as he did 20 years ago!

KANSAS CITY POWER & LIGHT CO.

Standard Laundry & Linen Supply Company

Phone Victor 0805

1116-22 Holmes Street

Chambers & Atwell Dental Laboratory

717 Shukert Bldg.

DENTAL TECHNICIANS

Phone GRand 2242

Kansas City, Mo.

WHERE TO GO? WHAT TO DO?

TRY

VINCE LABORATORY

PHONE VICTOR 1127

323 SHUKERT BLDG.

KANSAS CITY, MISSOURI

WIMER'S

FEATURING CLUB BREAKFASTS
LUNCHEON AND DINNERS

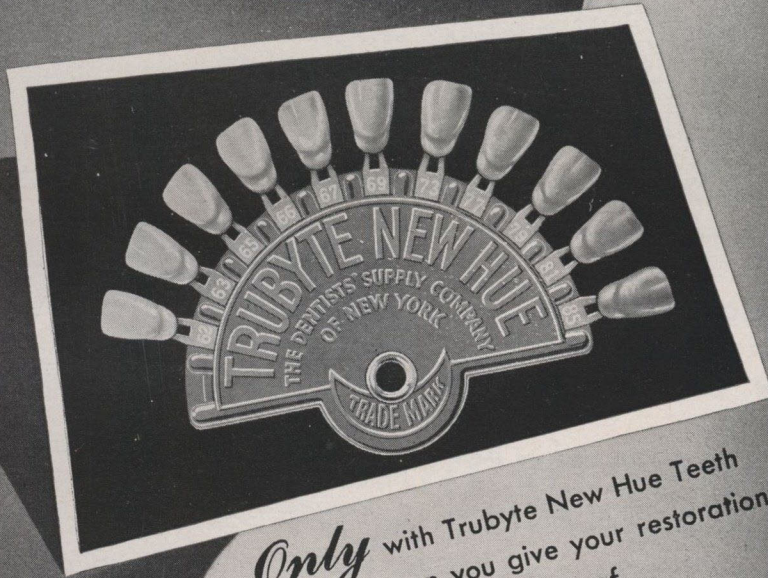
Phone VA 9433
302 West 47th St.

Country Club Plaza
Kansas City, Mo.

Bill Wimer

COLORS

so Natural...



Only with Trubyte New Hue Teeth
can you give your restorations
the vital, natural beauty of
Trubyte New Hue Shades.

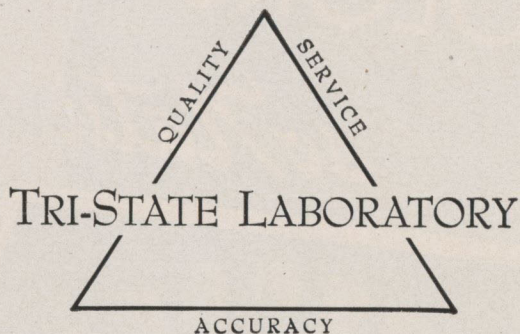
THE DENTISTS' SUPPLY COMPANY OF NEW YORK
220 West 42nd Street
New York 18, N. Y.

Best Wishes
from
MYRON'S DENTAL LABORATORY
and
SUPERIOR DENTAL SUPPLY COMPANY

721 Minnesota
Kansas City, Kansas

Technicians to the Dental Profession

M. H. ROBINSON
WM. W. OLDHAM



TICONIUM
GOLD

ROOM 224

2 EAST 39th ST., K. C. 2, MO.

PHONE LO. 2144

MYERSON TEETH

LEE SMITH PRODUCTS

W. B. GAUL & SONS DENTAL SUPPLY COMPANY

A Full Line of Dental Supplies for the Profession

1127 E. 31st St. Kansas City, Missouri

VA. 7031

WHIP-MIX PRODUCTS

YATES PRODUCTS

To the Kansas City-Western Dental College
and To All Discriminating Buyers
We Offer . . .

QUALITY IN ALL KINDS OF ENVELOPES

KANSAS CITY ENVELOPE COMPANY

1523-25 Walnut Street

HArrison 1020

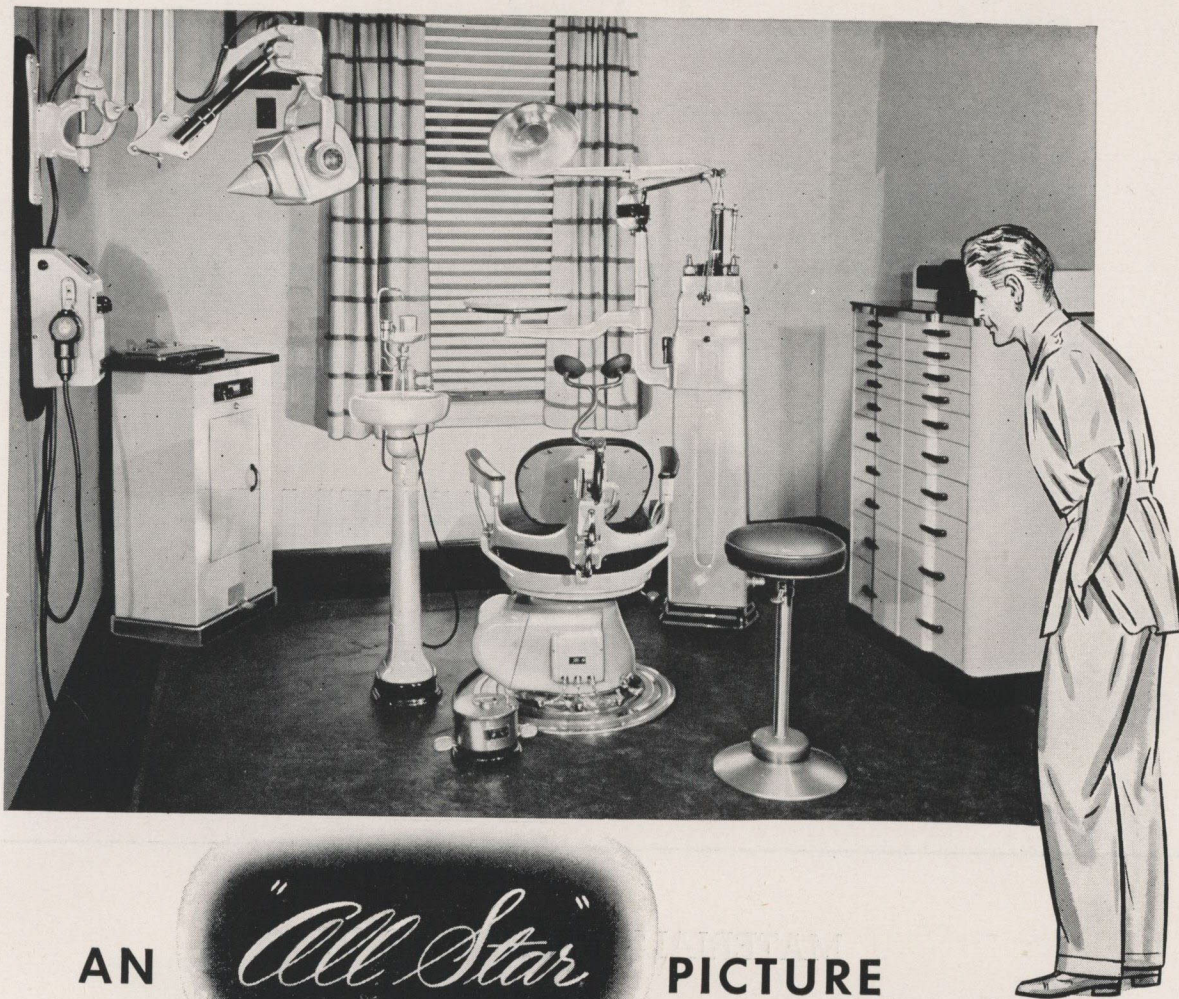
L. C. (BILL) ROWLAND

BARBER SHOP

For That Professional Look
1ST DOOR WEST OF CROWN DRUG STORE

1027 E. 31st

EXPERT SHOE SHINING



AN

"All Star"

PICTURE

YOU WILL WANT TO BE IN

A COMPLETE WEBER OFFICE is like a stage perfectly set for a great performance. Each major item of equipment . . . Weber Chair, Majestic Unit, RayDex X-Ray . . . is the last word in efficiency and beauty. Each is a model selected to suit exactly the practitioner's needs and preferences, located so that his individual operating techniques may function with maximum

skill and minimum effort. Plan now to "star" in such a "picture."

A complete Weber office designed and equipped especially for you will be a wise (and surprisingly moderate) investment that will pay big dividends in professional prestige and income for many years. Why not consult your Weber Dealer, and also write Weber for descriptive literature.

WEBER DENTAL MANUFACTURING CO.

WEBER

THE NAME TO REMEMBER
IN DENTAL EQUIPMENT



CRYSTAL PARK, CANTON 5, OHIO

- *For every Laboratory convenience*
- *For better Oral Restorations*
- *For Cooperation on all Prosthetics*

See

GENE MUELLER CO.

DENTAL LABORATORIES AND SUPPLIES

515½ East 15th Street
KANSAS CITY, MISSOURI

MATERIALS FASHIONED IN

Tru-Chrome

Offer striking advantages to dentists. Orthodontic and prosthetic appliances made of genuine Tru-Chrome alloy give greatest strength and smallest bulk in every application. They make for fast operation. This proven metal cannot harm the most delicate tissues. Yet, despite the definite superiority of Tru-Chrome materials, their cost is very low.



ROCKY MOUNTAIN METAL PRODUCTS CO.

1450 Galapago St.

P. O. Box 1887

Denver 1, Colo.

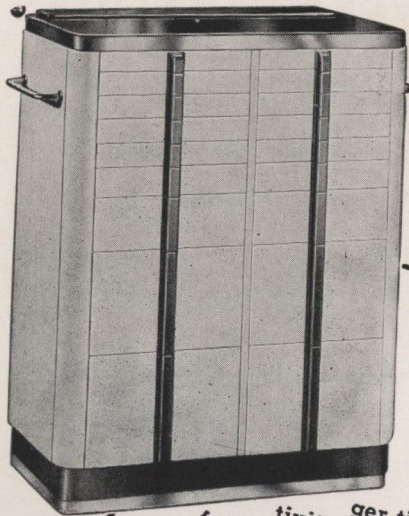
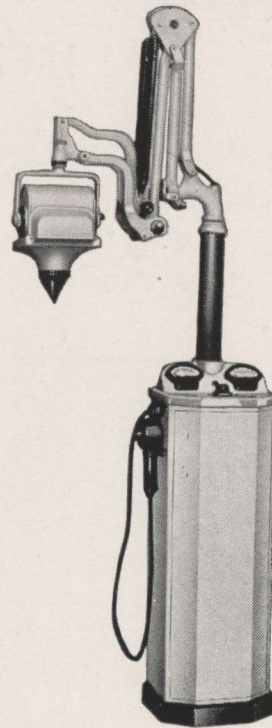
CHOOSE A CDX

for your own practice

As a working partner, a CDX dental x-ray unit can play a big role in helping you build an early successful practice. It will bring you patients, keep them coming back to you —and pay for itself in a short time.

Ask your dental dealer to show you the cleanly designed, finely engineered General Electric dental x-ray unit, built to the highest standards by a long-time leader in x-ray research and manufacture.

**GENERAL  ELECTRIC
X-RAY CORPORATION**



YOUR PRACTICE BUILDER

Let a new American Dental Cabinet help you build your practice. It will give your office an inviting, clean, and sanitary appearance. It will help patients build confidence in your practice. The American Cabinet, illustrated at the left, is mobile . . . for greater efficiency . . . it can be moved to the most convenient operating position for each patient. Every thing you need will be at your fingertips . . . within your sphere of activity. See your American dealer before you start your practice . . . he will be glad to help plan your office.

THE AMERICAN CABINET COMPANY

TWO RIVERS

WISCONSIN

PROFESSIONAL DISCOUNT
ON ALL PRESCRIPTIONS

Dental Supplies

HIGHLAND PHARMACY, No. 2

Prescription Druggists

S. E. Coner 12th and Troost

PHONES HARRISON 6723 - 6724

Claude Falkenstein

Roy Dingman

BAR-B-Q MEATS

PRIME STEAKS

MADDEN'S

CAFE • BAR

Italian Spaghetti and Meat Balls

1106 East 12th Street

Phone HArrison 9170

C-R

CROWLEY-REUTER

Stationery Co.

Stationers and Printers

The Largest Stock of Commercial Stationery in Kansas City

ORTHODONTIC RUBBER BANDS

932 Wyandotte

Phone Victor 3028

Kansas City 6, Mo.

good fellowship and good food

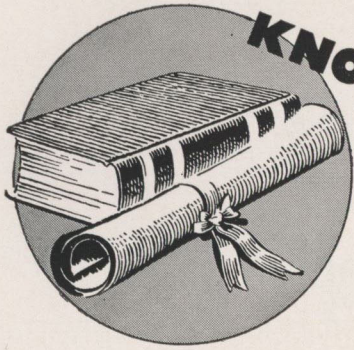
AT THE

SUGAR BOWL

The Best in Sandwiches and Fountain Specialties

924 Troost

HArrison 9077



KNOWING HOW WINS DIPLOMAS



TELLING HOW WINS PATIENTS

When you "put into practice" what you've learned about the science of dentistry — you'll agree that *recommendations* are an important phase of practice-building. • Take oral hygiene, for example: Your expert instructions on proper care of the mouth, augmented by your recommendation of Py-co-pay Tooth Powder and Brush, will aid your patients in maintaining clean teeth . . . healthy gums . . . fresh mouth! • The Py-co-pay Tooth Brush is recommended by more dentists than any other tooth brush. It's a professional type brush with a small head, containing two rows (6 tufts per row) of fine, firm bristles — available in *natural* bristles or *nylon* in a complete range of textures. • Py-co-pay Tooth Powder bears the seal of acceptance of the Council on Dental Therapeutics of the American Dental Association. It is refreshing...and removes surface stains with minimum abrasion. • Your routine recommendation of this "Py-co-pay team" will remind your patients *twice each day* to remember your instructions and to visit you regularly.



PY-CO-PAY

PYCOPE, INC., 2 HIGH STREET, JERSEY CITY 6, N. J.

A WISE CHOICE
Select Your Dental Dealer
FIRST

Hettinger's have equipped a majority of the offices in their territories, and their experience, skill and genuine desire to serve you are at your command.

WE ASSURE SERVICE IN 18
STATES WITH 22 HOUSES
FOR YOUR CONVENIENCE

HETTINGER BROS.

KANSAS CITY

OKLAHOMA CITY

TULSA

LINCOLN

TOPEKA

D. P. (Dots) MANROSE

FRANCIS FOSTER

College Representatives

PORTER'S

Operating

Gowns

of

All

Kinds

210 West 8th Street

Kansas City, Missouri

Harrison 6929

HENRY MOORE

PHOTOGRAPHER

214 East Eleventh Street

Victor 4531

Kansas City, Mo.

LUKE F. HERLAC

LABORATORY TECHNICIANS

Service Limited to Full and Partial Dentures

1206 Professional Bldg.

Phone HArrison 3033

Kansas City, Missouri

DANIELS DENTAL TECHNICIANS

VI 9446

Pleasing You, Doctor, Keeps Us in Business

The Best by the Toughest Test

Pressure Cast Luxene-44

CERTIFIED LUXENE LABORATORY

428-29 Professional Building

Kansas City, Missouri

FOREST HOTEL

Strictly Modern Rooms and Kitchenettes With or Without Bath

HArrison 9669

920 Forest Avenue

O. E. DAVIS

CERAMIST AND GOLD TECHNICIAN

Gold, Porcelain, and Acrylic Work of All Kinds

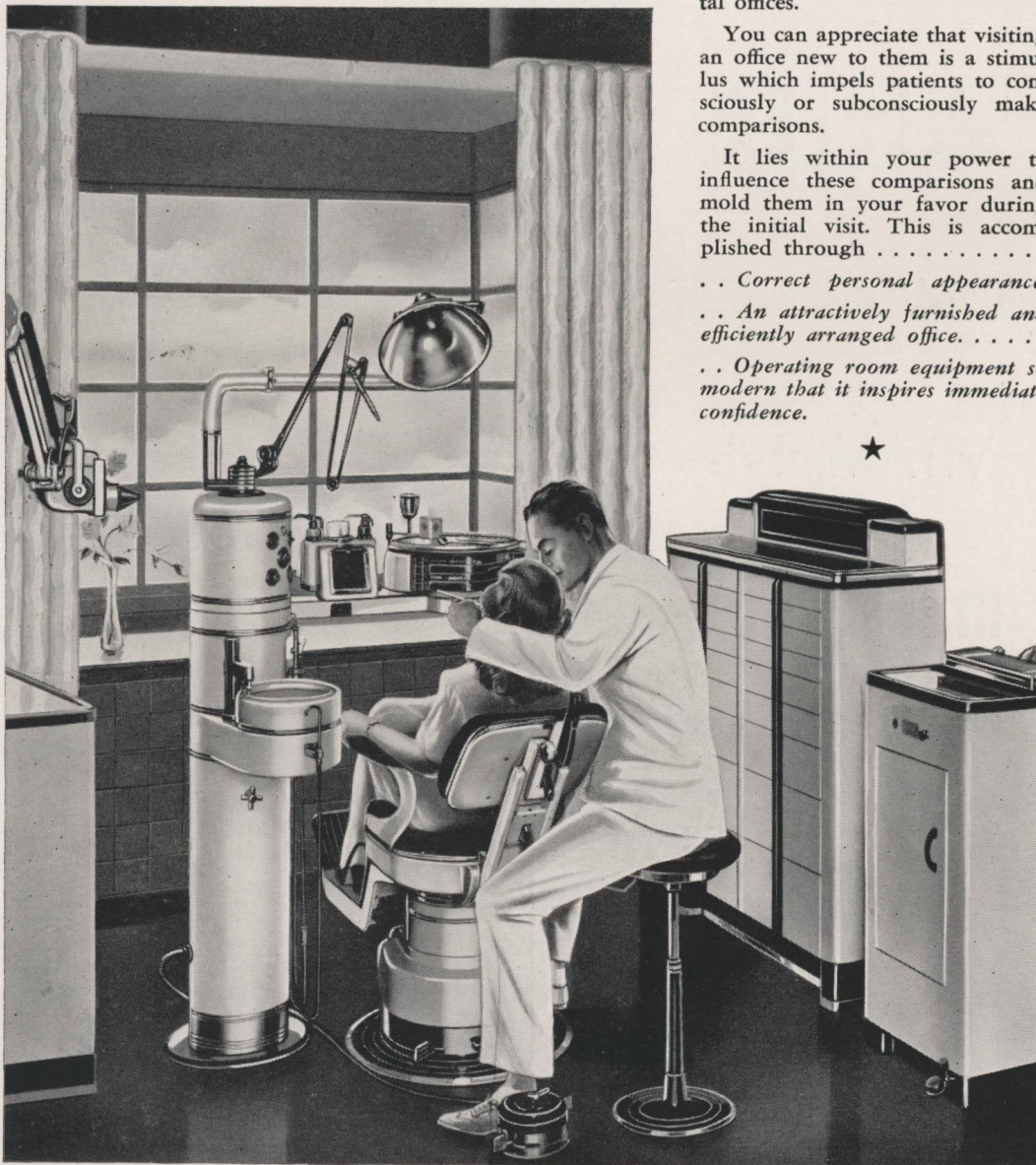
GRand 2835

1426 Professional Bldg.

1st impressions are important.....

You can mold them in your favor

FREE OFFICE PLANNING SERVICE. Establishing an inviting, attractively furnished, efficiently arranged office which will win and hold patients who come to you will be easier and more economical if you make use of our free Office Planning Service. Any distributor of S. S. White Equipment will gladly supply full details. Or write to us direct.



You should bear in mind that the majority of new patients who enter your office have upon one or more occasions visited other dental offices.

You can appreciate that visiting an office new to them is a stimulus which impels patients to consciously or subconsciously make comparisons.

It lies within your power to influence these comparisons and mold them in your favor during the initial visit. This is accomplished through

- .. Correct personal appearance.
- .. An attractively furnished and efficiently arranged office.
- .. Operating room equipment so modern that it inspires immediate confidence.



THE S. S. WHITE DENTAL MFG. CO., 211 South 12th Street, PHILADELPHIA 5, PA.
"OVER A CENTURY OF SERVICE TO DENTISTRY"

For Real Enjoyment!

DRINK

AINES

HOMOGENIZED

VITAMIN - D

MELLO-"D"

MILK

"Quality You Can Taste"

VA. 3880

We Specialize in

Manufacturing Jewelry to Order

Bring us your idea we will design and estimate
without charge

Watch & Jewelry

Diamond & Ring

Repairing

Engraving

DIAMONDS — WATCHES — JEWELRY

FRED W. HUFF JEWELRY COMPANY

508 Altman Bldg.

HA 4526

Up Where Prices are Down

GLENCOE CLEANERS

Expert Cleaners of

DRAPES

SLIP COVERS

WEARING APPAREL

5101 Main

VA 9012

L. G. BALFOUR CO.

NATIONAL MANUFACTURERS

School & College Jewelry - Stationery

Official Fraternity Jewelry

College Rings - Pins

Commencement Announcements

Medals & Trophies

KANSAS CITY BRANCH

1002 Walnut

Victor 6855

*Ellsworth
Flower Shop*

VAentine 7922

5107 Main

In appreciation of many years consideration
shown in allowing me to be of assistance in
planning to make your future more secure.

H. Frank Poole

Representing

NEW YORK LIFE INSURANCE COMPANY

VI. 2090

VA. 7821

Kansas City, Missouri

KRAUSE DENTAL SUPPLY AND GOLD COMPANY

1314 Bryant Building, Kansas City, Missouri

Exclusive representatives of Veri-Chrome Teeth, Vita-Lite Acrylic
Resins, and Krause Golds. Also carrying complete lines of Mizzy
Products, Midwest Handpieces, Wesco Instruments, Whip-Mix
Instruments and Stones, Baker Products and Lee Smith Porcelains

GULLEY DENTAL LABORATORY

QUALIFIED DURALLIUM TECHNICIANS

221-224 Shukert Bldg.

Kansas City 6, Mo.

HOWARD'S CAFE

Featuring the Finest in Foods

926 Troost

HA 9420

A-1 CLEANERS

Expert Alterations and Repairs

922 Troost
Kansas City, Mo.

THE SNACK SHOP

Short Orders

Home Made Pies Our Specialty

Eddie and Virginia Doughty

1008 Troost

HA 9502

DYSART DENTAL LABORATORY

VITALLIUM CASTINGS

AUSTENAL MICROMOULD TEETH

Luxene 44

A Complete Laboratory Service

417-20 Argyle Bldg.

Victor 9490

HOLMAN DENTAL LABORATORY

Technicians To Discriminating Dentists

A Laboratory Identified With Outstanding Products

AUSTENAL MICROMOLD TEETH

VITALLIUM

LUXENE 44

Our technicians have the necessary skill to obtain
the most from these outstanding products.

926 Chambers Building

Kansas City 6, Missouri

THE
Pattison-McGrath
Company

HOME TRUST BLDG.

1117 Walnut

Kansas City, Missouri

•

Dental Equipment
Dental Supplies and
X-Ray Machines

•

WM. ZIMMERMAN

RUSSELL C. COOLEGE

COLLEGE REPRESENTATIVES

CARL HOFF

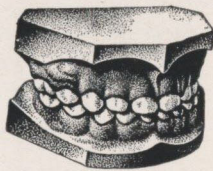
Your education guarantees economic opportunity.

Your life insurance guarantees economic security.



KANSAS CITY LIFE INSURANCE COMPANY

Kansas City, Missouri



*Serving Dentistry
and Dental Colleges
for 30 Years*



HEADQUARTERS

for

Dental Models and Brown Precision Attachments

16-page Illustrated Price List sent on request.

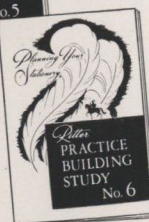
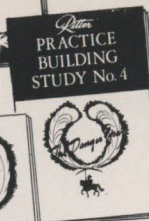
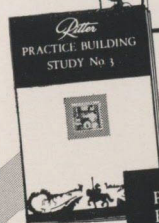
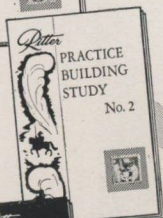
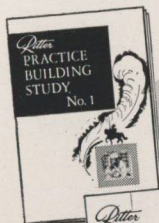
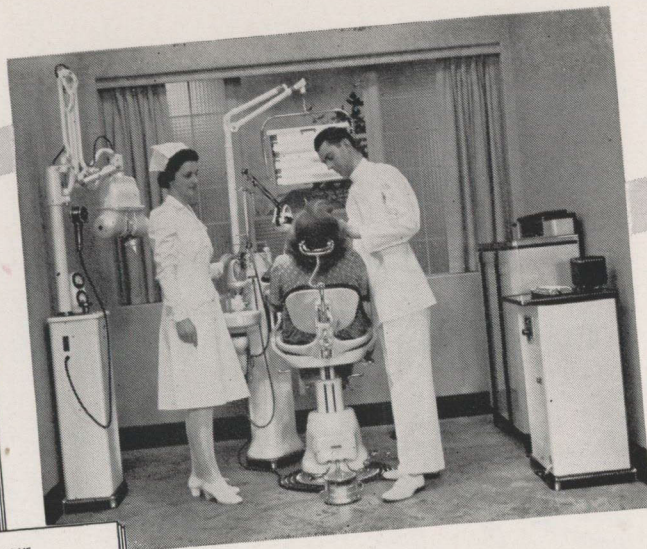
If interested in Attachments, also ask
for Twelve Design Charts.

COLUMBIA DENTOFORM CORPORATION

131 East 23rd Street

New York 10, N. Y.

"The House of a Thousand Models"



Let RITTER Help *You* Plan for DENTAL LEADERSHIP

Like the majority of the leading dentists of America, you are planning to equip your office with the best—RITTER . . . And like every successful dentist, you are interested in **PLANNING TODAY** for **TOMORROW**.

The Ritter Company can help you as it has helped thousands of others, for example:

1. Read "Dentistry's Future" and the Ritter Practice Building Studies. Your Ritter Dealer has them, or write to us for copies.
2. Use the Ritter Statistical Service. We'll furnish facts about the communities you may be considering for your practice.
3. Use the Ritter Office Planning Department. We'll plan every detail of your layout—including decorations.
4. Your Ritter Dealer will explain the Ritter Deferred Payment Plan—you pay for your equipment out of earnings.

Good business planning starts long before you begin to practice. Let us help you start **NOW!** Ritter Company, Inc., Ritter Park, Rochester 3, N. Y.

Ritter

BUILT UP TO A STANDARD



NOT DOWN TO A PRICE

ROCHESTER, N. Y.

THE
Only
LINK



THAT MAKES THE CHAIN

T I C O N I U M

413 N. PEARL ST.

ALBANY 1, N. Y.

THE
Only
LINK

THAT MAKES THE CHAIN

F. E. O. F. E. M.

1914

1914



MADE IN
CHICAGO